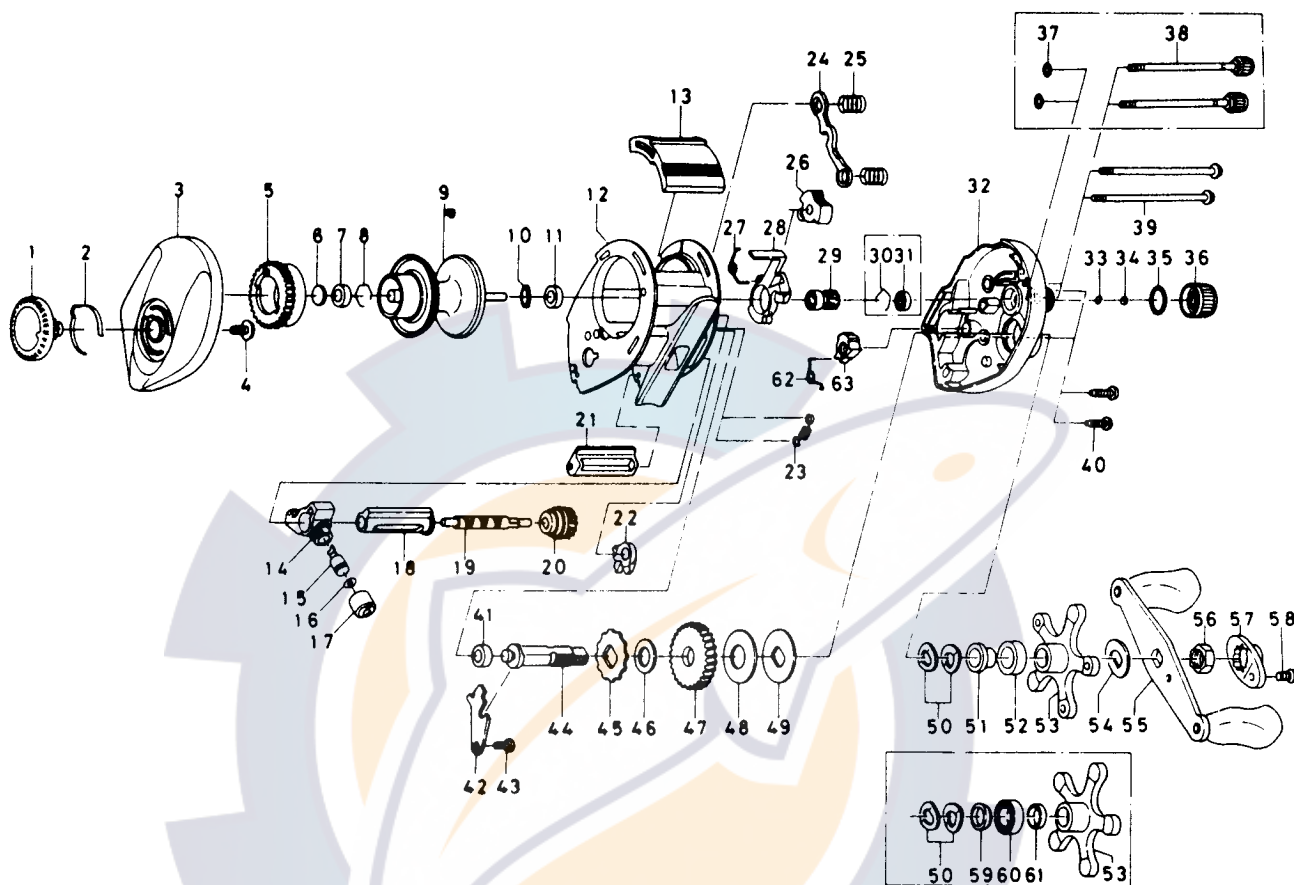


BAITCASTING REEL — AG2



Key No.	Parts No.	Parts Name	Key No.	Parts No.	Parts Name
1	F15-7403	Brake adjusting knob	29	E42-0901	Pinion gear
2	F03-2401	Brake click spring	32	F05-4234	Right side plate
3	F13-7208	Left side plate	33	E16-9203	Spool adjusting cap metal
4	B84-2102	Brake adjusting knob screw	34	E17-0501	Spacer B
5	E23-9501	Magnet holder	35	171-5201	"O" ring A
6	375-7400	Spacer A	36	F12-4601	Cast control cap
7	B55-0301	Bushing A	39	E28-4901	Right side plate screw
8	B42-1601	Bearing retainer A	40	E33-0401	Set plate screw
9	F05-4901	Spool assembly	41	B55-0301	Bushing A
10	F12-0701	Ball bearing retaining ring	42	E23-7601	Drive shaft retainer
11	E35-1501	Bushing B	43	B83-4402	Drive shaft retainer screw
12	F05-3701	Frame assembly	44	E23-7501	Drive shaft
13	F05-4001	Clutch lever	45	E32-7701	Anti-reverse ratchet
14	E16-6301	Line guide	46	375-7103	Drive shaft washer
15	121-4212	Line guide pawl	47	F12-6701	Drive gear
16	375-4001	Line guide washer	48	B36-0202	Drag washer
17	342-4801	Pawl cap	49	B36-0301	Key washer
18	E31-2001	Level wind guard	50	150-8901	Drag spring washer
19	E45-1201	Worm shaft	51	E34-6801	Spacing sleeve
20	F08-5201	Worm shaft gear	52	E32-6401	Bushing C
21	F05-3902	Line guard	53	E23-8701	Star drag
22	E23-8001	Anti-reverse pawl	54	150-9001	Friction washer
23	E16-5801	Clutch trip plate spring	55	E30-5201	Handle assembly
24	E23-7701	Yoke	56	B43-3601	Handle nut
25	E16-7101	Yoke spring	57	F05-4401	Handle nut plate
26	E24-9101	Flipping/casting selector	58	351-1801	Handle nut plate screw
27	E24-9001	Clutch cam spring	62	F12-0501	Anti-reverse lever spring
28	E23-7401	Clutch cam	63	E30-9501	Anti-reverse lever